

Item No. 241792 - Tough Sleeve, Quick Release Power Dock and Hard-Wired Power Supply



Compatible with:

Samsung Galaxy Tab A7 Lite 8.7"
(2021 SM-T220 SM-T225 SM-T227)

Important:

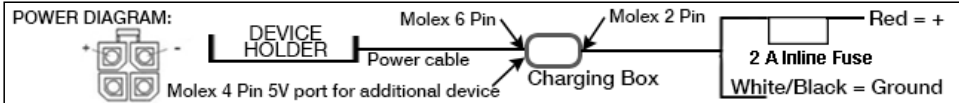
Self-installation instructions and advice are provided for your convenience. It is your responsibility to determine if you have the knowledge, skills, and physical ability required to properly perform an installation. ProClip USA, LLC. shall have no liability for damage or injury resulting from the installation or use of any ProClip or third party products. It is your responsibility to ensure that all products are installed in adherence with local laws and regulations and in such a manner as to allow a vehicle to be operated safely and without distraction. ProClip USA, LLC. product warranties do not cover the installation, removal or re-installation of any product.

Power Rating: Input Voltage: 12-24 VDC, 1A Output Voltage: 5 VDC, 2.1A

It is recommended to connect the cigarette lighter plug to a cigarette lighter receptacle near the holder so it is easily accessible in case the holder needs to be disconnected from the main power supply.

Attention:

Carefully read all instructions and review the images before installing this product.



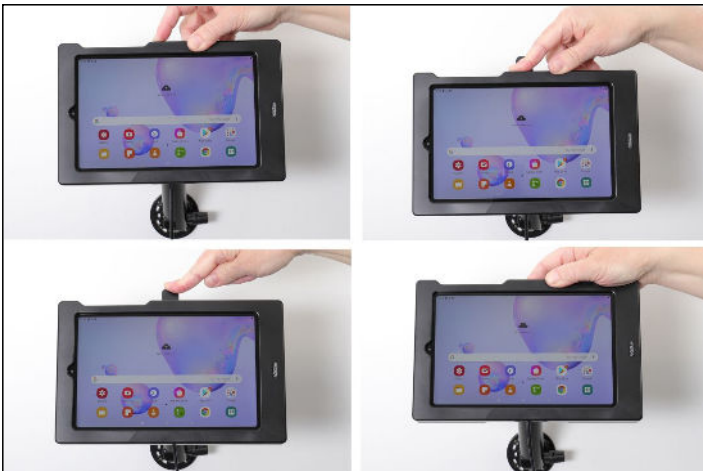
1. To secure tablet in the sleeve:

Place tablet face up on the Tough Sleeve back plate and connect the power cord. Fit the Tough Sleeve face plate over the tablet to enclose the device. Making sure to hold the sleeve together, flip it over and secure using the enclosed screws. Once in place the tablet will be secured inside the Tough Sleeve.



2. To mount the Quick Release Power Dock:

Unscrew the screw in the center of the power block so you can remove the tilt-swivel base plate on the back. Place the base plate on the mounting surface. Attach the base plate to a wall or any AMPS compatible mount. Replace the power dock with the center screw. Adjust the dock to the preferred position, and then tighten the center screw firmly to lock it into position.



3. To insert the Tough Sleeve:

Insert the Tough Sleeve into the power dock. The release lever will click when the dock is in place.

To remove the sleeve:

Press the release tab on the power dock slightly and slide the Tough Sleeve up and out of the dock.



4. Charging while Docked

The charging connectors in the Quick Release Power Dock allow the tablet to stay charged while in the sleeve. This provides the tablet protection while charging and an easy way to remove it for those use cases outside the vehicle.

Returns

All returns must be made within thirty (30) days of the delivery date and include proof of purchase, a copy of your original order, or invoice. No products shipped hereunder may be returned without ProClip USA's prior approval. In order to return a product, the buyer must obtain an RMA number (Return Merchandise Authorization Number). **Items returned without a valid RMA number may be rejected. Items that are open, used, damaged, or returned without all original components may have a restocking fee applied.**

Limited Warranty and Liabilities

ProClip warrants that the Products will be free of defects in materials and workmanship for a period of one (1) year from the date of purchase. If any Product should become defective within the warranty period, ProClip, at its option, will replace it, repair it or refund the purchase price. Repair or replacement parts or Products will be furnished on an exchange basis and will either be new or reconditioned. All replaced Products shall become the property of ProClip. Warranty service is available to you by delivering the Product during the warranty period to the company it was purchased from or to ProClip at 4915 Voges Rd., Madison, WI 53718 USA and providing proof of purchase, price and date. If shipped to ProClip, the buyer must first call ProClip at +1 800-296-3212 or e-mail ProClip at returns@proclipusa.com to obtain a return approval and return number. You will bear all shipping, packaging and insurance costs and all other costs, excluding labor and parts, necessary to effectuate repair, replacement or refund under this warranty. For more information on how to obtain warranty service, write, e-mail or telephone ProClip at 4915 Voges Rd., Madison, WI 53718 USA. Tel: +1 800-296-3212, e-mail: returns@proclipusa.com.

THIS LIMITED WARRANTY DOES NOT EXTEND TO ANY PRODUCT WHICH HAS BEEN DAMAGED AS A RESULT OF ACCIDENT, MISUSE, ABUSE OR AS A RESULT OF UNAUTHORIZED SERVICE. THIS WARRANTY IS IN LIEU OF ALL OTHER EXPRESS WARRANTIES FOR THIS PRODUCT. IMPLIED WARRANTIES, INCLUDING THOSE OF MERCHANTABILITY, FITNESS FOR A PARTICULAR PURPOSE AND NON-INFRINGEMENT SHALL HAVE NO GREATER DURATION THAN 1 YEAR FROM THE DATE OF PURCHASE. IN THE EVENT THIS PRODUCT BECOMES DEFECTIVE DURING THE WARRANTY PERIOD, THE PURCHASER'S EXCLUSIVE REMEDY SHALL BE REPAIR, REPLACEMENT OR REFUND AS PROVIDED ABOVE. IN NO EVENT SHALL PROCLIP BE LIABLE FOR INCIDENTAL OR CONSEQUENTIAL DAMAGES, INCLUDING WITHOUT LIMITATION LOSS OF PROPERTY, ARISING FROM BREACH OF ANY EXPRESSED OR IMPLIED WARRANTY. PROCLIP DISCLAIMS ALL WARRANTIES, EXPRESS OR IMPLIED, OTHER THAN THOSE SET FORTH ABOVE. IN NO EVENT WILL PROCLIP BE LIABLE TO YOU OR ANY THIRD PARTY FOR ANY INCIDENTAL OR CONSEQUENTIAL DAMAGES, INCLUDING, WITHOUT LIMITATION, INDIRECT, SPECIAL, PUNITIVE, OR EXEMPLARY DAMAGES, INCLUDING ATTORNEY FEES ARISING OUT OF THE USE OF OR THE INABILITY TO USE THE PRODUCTS, OR FOR ANY CLAIM BY ANY OTHER PARTY, EVEN IF PROCLIP HAS BEEN ADVISED OF THE POSSIBILITY OF SUCH DAMAGES.

Regulatory information: www.proclipusa.com/regulatory.html